



Annie Lennox Building

Annie Lennox Building, Glasgow Caledonian University, Cowcaddens Road, Glasgow, G4 0BA

0141 331 3000 (tel:0141 331 3000)

[Send email \(mailto:studentenquiries@gcu.ac.uk\)](mailto:studentenquiries@gcu.ac.uk)

[Visit website \(http://www.gcu.ac.uk/\)](http://www.gcu.ac.uk/)



Access Guide

Introduction

- Services / facilities within the building include the Glasgow School for Business and Society, staff dining room, teaching rooms, lecture theatres and academic offices.
- Level 0 - Lecture theatre / conference hall W011, staff dining room
- Level 1 - Glasgow School for Business and Society, Undergraduate Programmes Office, Postgraduate Programmes office, access to Saltire Centre
- Level 2 - Department of Business Management, Management Innovation Operations offices
- Level 3 - Department of Law, Economics, Accountancy and Risk Law
- Level 4 - Department of Economics and International Business
- Level 5 - Deans Office, GCU Learning Development Centre, access to Saltire Centre
- Level 6 - Department of Social Sciences, Media and Journalism
- Level 7 - Department of Business Management, Human Resources, Sports, Events and Tourism Management
- Level 8 - PhD student offices.

Rooms and Spaces Links (Floors G and 1)

Lecture Theatre(s)

[View](#)

- [To view the AccessAble Access Guide for W011 Lecture Theatre please click here \(new tab\)](https://www.accessable.co.uk/glasgow-caledonian-university/access-guides/w011-lecture-theatre) (https://www.accessable.co.uk/glasgow-caledonian-university/access-guides/w011-lecture-theatre)
- [To view the AccessAble Access Guide for W110 Lecture Theatre please click here \(new tab\)](https://www.accessable.co.uk/glasgow-caledonian-university/access-guides/w110-lecture-theatre) (https://www.accessable.co.uk/glasgow-caledonian-university/access-guides/w110-lecture-theatre)
- [To view the AccessAble Access Guide for W115 Lecture Theatre please click here \(new tab\)](https://www.accessable.co.uk/glasgow-caledonian-university/access-guides/w115-lecture-theatre) (https://www.accessable.co.uk/glasgow-caledonian-university/access-guides/w115-lecture-theatre)

Teaching Room(s)

[View](#)

- [To view the AccessAble Access Guide for W001 please click here \(new tab\)](https://www.accessable.co.uk/glasgow-caledonian-university/access-guides/w001) (https://www.accessable.co.uk/glasgow-caledonian-university/access-guides/w001)
- [To view the AccessAble Access Guide for W005 please click here \(new tab\)](https://www.accessable.co.uk/glasgow-caledonian-university/access-guides/w005) (https://www.accessable.co.uk/glasgow-caledonian-university/access-guides/w005)
- [To view the AccessAble Access Guide for W006 please click here \(new tab\)](https://www.accessable.co.uk/glasgow-caledonian-university/access-guides/w006) (https://www.accessable.co.uk/glasgow-caledonian-university/access-guides/w006)
- [To view the AccessAble Access Guide for W009 please click here \(new tab\)](https://www.accessable.co.uk/glasgow-caledonian-university/access-guides/w009) (https://www.accessable.co.uk/glasgow-caledonian-university/access-guides/w009)
- [To view the AccessAble Access Guide for W101 please click here \(new tab\)](https://www.accessable.co.uk/glasgow-caledonian-university/access-guides/w101) (https://www.accessable.co.uk/glasgow-caledonian-university/access-guides/w101)
- [To view the AccessAble Access Guide for W108 please click here \(new tab\)](https://www.accessable.co.uk/glasgow-caledonian-university/access-guides/w108) (https://www.accessable.co.uk/glasgow-caledonian-university/access-guides/w108)
- [To view the AccessAble Access Guide for W119 please click here \(new tab\)](https://www.accessable.co.uk/glasgow-caledonian-university/access-guides/w119) (https://www.accessable.co.uk/glasgow-caledonian-university/access-guides/w119)

Seminar Room(s)

[View](#)

- [To view the AccessAble Access Guide for W010A please click here \(new tab\)](https://www.accessable.co.uk/glasgow-caledonian-university/access-guides/w010a) (https://www.accessable.co.uk/glasgow-caledonian-university/access-guides/w010a)
- [To view the AccessAble Access Guide for W010B please click here \(new tab\)](https://www.accessable.co.uk/glasgow-caledonian-university/access-guides/w010b) (https://www.accessable.co.uk/glasgow-caledonian-university/access-guides/w010b)

Computer Room(s)

[View](#)

- [To view the AccessAble Access Guide for W102 please click here \(new tab\)](https://www.accessable.co.uk/glasgow-caledonian-university/access-guides/w102) (https://www.accessable.co.uk/glasgow-caledonian-university/access-guides/w102)

Other Room(s)

[View](#)

- [To view the AccessAble Access Guide for Staff Area - Dining Room please click here \(new tab\)](https://www.accessable.co.uk/glasgow-caledonian-university/access-guides/staff-dining) (https://www.accessable.co.uk/glasgow-caledonian-university/access-guides/staff-dining)

- [To view the AccessAble Access Guide for W623 please click here \(new tab\)](https://www.accessable.co.uk/glasgow-caledonian-university/access-guides/w623) (https://www.accessable.co.uk/glasgow-caledonian-university/access-guides/w623)

Opening Times

- Monday 06:30 - 21:30.
- Tuesday 06:30 - 21:30.
- Wednesday 06:30 - 21:30.
- Thursday 06:30 - 21:30.
- Friday 06:30 - 20:30.
- Saturday 08:00 - 16:30.
- Sunday 08:00 - 16:00.

Getting Here

By Road

View

- The University is located on Cowcaddens Road, easily accessible from Junction 16 (Westbound) or Junctions 15 & 17 (Eastbound) of the M8 motorway.
- Campus parking is only available for permit holders and visitors only.
There is Blue Badge parking available between the rear of the Sir Alex Ferguson Library and from the Carnegie Lecture Theatre and the PhD Building.
Public parking available at the Concert Square car park on Cowcaddens Road diagonally opposite the University. Additional public parking is also available at the Buchanan Galleries on Killermont Street.
There is pay and display street parking on Milton Street at the rear of the campus, time limited to 3 hours.

By Bus

View

- The university is situated opposite the Buchanan Bus Station which is served by routes 4, 9, 9A, 10A, B10, C10, 27, 54, 68, 71, 71A, 72, 77, 87, 88, 88A, 88C, 89, 89A, 89B, 213, 240, 240X, 255, 263, 267, 334, 336, 336, 500, 532, 537, 590, 592, 539, 542, 548, 588, 590, 592, 618, 900, 901, 906, 906X, 907, 914, 915, 916, 923, 926, 976, 977, G9, G10, L1, M8, M9, M11, M20, X1, X3, X7, X8, X11, X23, X24, X25, X25A, X26, X27, X28, X34, X36, X39, X44, X71, X74, X76, X77, X77N, X78, X79, X85, and X87.
There are additional bus stops on North Hanover Street within 50m of the Student Association Building served by routes 27, 71, 87, 128, 329, CB1, X23, 88, 88A, 88C, 89, 89A and 89B.

By Train

View

- The nearest national railway station is Queen Street, which is 0.5 miles (11 minutes) from the university via North Hanover Street.
Glasgow Central Station is also not far, 0.7 miles (14 minutes) via West Nile Street.
However, all of the central Glasgow stations are within reach of the campus using public transport.

By Underground

View

- The nearest subway is Cowcaddens Underground Station, 0.4 miles (7 minutes) west of the university via Cowcaddens Road.
However, Buchanan Street Underground Station is popular as it is located in the main shopping area and is about 0.4 miles (8 minutes) south of the university via West Nile Street and Buchanan Street.

Useful Links

View

- Please see the "How to Find Us" page of the University website for more information on getting to the campus and to download a campus map and a local map.
- [To view the web page described above click here \(opens in new tab\)](https://www.gcu.ac.uk/theuniversity/howtofindus/#) (https://www.gcu.ac.uk/theuniversity/howtofindus/#).
- The Strathclyde Partnership for Transport (SPT) website for details on buses and the underground.
- [To view the web page described above click here \(opens in new tab\)](http://www.spt.co.uk/) (http://www.spt.co.uk/).
- The National Rail Enquiries website for details on trains to the Glasgow Stations.
- [To view the web page described above click here \(opens in new tab\)](http://www.nationalrail.co.uk) (http://www.nationalrail.co.uk).

AccessAble Related Links

View

- [Glasgow Central Station AccessAble Access Guide \(new tab\) - click here](https://www.accessable.co.uk/glasgow-city-council/glasgow-city-council/access-guides/glasgow-central-station) (https://www.accessable.co.uk/glasgow-city-council/glasgow-city-council/access-guides/glasgow-central-station)

Useful Information

- [To see more information on UK Student Recruitment Team - Course Enquiries please click here \(opens new tab\)](https://www.gcu.ac.uk/ukstudentrecruitment/) (https://www.gcu.ac.uk/ukstudentrecruitment/).
- Telephone Number: 0141 331 8681.
- Email: ukroenquiries@gcu.ac.uk.
- [To see more information on Advice Centre please click here \(opens new tab\)](https://www.gcustudents.co.uk/advice) (https://www.gcustudents.co.uk/advice).
- Telephone Number: 0141 273 1650.
- Email: advice@GCUstudents.co.uk.
- [To see more information on University Accommodation Office please click here \(opens new tab\)](https://www.gcustudents.co.uk/accommodation) (https://www.gcustudents.co.uk/accommodation).
- Telephone Number: 0141 331 3980.
- Email: accommodation@gcu.ac.uk.

• [To see more information on Student Wellbeing Disability Team please click here \(opens new tab\) \(https://www.gcu.ac.uk/student/studentlife/studentsupport/disabilityteam/\)](https://www.gcu.ac.uk/student/studentlife/studentsupport/disabilityteam/).

• Telephone Number: 0141 273 1371.

• Email: disability@gcu.ac.uk.

• The Disability Team are based in room M136 in the George Moore building.

The office is open Monday-Friday 09:00 -12.30 and 13.30 - 17:00.

Meetings with a Disability Adviser are by appointment only. In addition to the standard opening hours, Disability Advisers offer early or late appointments three days a week.

Assistive technology equipment and devices may be obtained for use in the campus building through the Disability Team.

Site/Campus Car Park (Main Campus Parking)

Photos



Car Park

[View](#)

- The car park is located at the rear of the campus site accessed from Cowcaddens Road.
- The nearest building(s) to this car park is/are Sir Alex Ferguson Library, George Moore Building and the PhD Centre.
- The car park type is open air/surface.
- The car park does not have a height restriction barrier.
- The car park surface is tarmac.
- Designated Blue Badge parking bays are not available.

Charges and Restrictions

[View](#)

- This car park can be used by permit holders.
- There are no parking charges that apply on the day.

Drop Off Point

[View](#)

- There is a designated drop off point in this car park.
- There is not a dropped kerb from the drop off point.

Car Park Access

[View](#)

- There is ramped access to the car park from the main campus buildings.
- This car park is not clearly signposted from the Sir Alex Ferguson Library.

Comments

[View](#)

- To get to the car park follow the access road from Cowcaddens Road to the left.
- The designated drop off point is immediately to the right at the main car park access gate, between the Hamish Wood and Britannia buildings.

Site/Campus Car Park (Blue Badge Parking)

Photos



Car Park

[View](#)

- The car park is located between the rear of the Sir Alex Ferguson Library and Charles Oakley Laboratories.
- The nearest building(s) to this car park is/are the Sir Alex Ferguson Library and Charles Oakley Laboratories.

- The car park type is open air/surface.
- The car park does not have a height restriction barrier.
- The car park surface is tarmac.
- Designated Blue Badge parking bays are available.
- The Blue Badge bay(s) markings are faded.
- There is/are 10+ designated Blue Badge parking bay(s) within this car park.
- The dimensions of the designated parking bay(s) are 495cm x 595cm (16ft 3in x 19ft 6in).
- The dimensions of the designated bays do vary in size.

Charges and Restrictions

View

- This car park can be used by permit holders.
- There are no parking charges that apply on the day.

Drop Off Point

View

- There is a designated drop off point in this car park.
- There is not a dropped kerb from the drop off point.

Car Park Access

View

- There is ramped access to the car park from the Oakley Laboratories Main Entrance.
- The nearest designated bay is 26m (28yd 1ft) from the Carnegie Lecture Theatre entrance.

Comments

View

- To get to the car park follow the access road from Cowcaddens Road and then to the right behind the Sir Alex Ferguson Library.
- The designated drop off point is immediately to the right at the main car park access gate, between the Hamish Wood and Britannia buildings as shown in photograph 4.
- There is additional Blue Badge parking next to the Students' Association Building and the Arc Health and Wellbeing Facility, entered by a security gate from North Hanover Street.

Outside Access (Main Entrance)

Photos



Entrance

View

- This information is for the entrance located at the front of the building.
- There is step free access at this entrance.
- There is a canopy or recess which provides weather protection at this entrance.
- The main door(s) open(s) automatically.
- The door(s) is / are double.
- The width of the door opening is 161cm (5ft 3in).

Second Set of Doors

View

- There is a second set of doors.
- The door(s) open(s) automatically.
- The door(s) is / are double.
- The width of the door opening is 163cm (5ft 4in).

Comments

View

- The main entrance is shown in photographs 1 and 2.
- The inner entrance is shown in photographs 3 and 4

- There are a second set of similar automatic doors opposite the first set of doors. These are shown in photographs 5 and 6.

Outside Access (North East Entrance - Rear Door)

Photos



Entrance

[View](#)

- This information is for the entrance located at the rear of the North East Entrance lobby, at the rear left corner of the building.
- There is ramped/sloped access at this entrance.
- There is a canopy or recess which provides weather protection at this entrance.
- The main door(s) open(s) automatically (towards you).
- The door(s) is/are push pad activated.
- The door(s) is / are single.
- The width of the door opening is 90cm (2ft 11in).

Ramp/Slope

[View](#)

- There is a ramp/slope at this entrance.
- The ramp/slope is located to the right as you face the entrance.
- The ramp/slope gradient is slight.
- The ramp is permanent.
- There is a level landing at the top of the ramp.
- The ramp does have handrails.
- The handrails are on both sides.

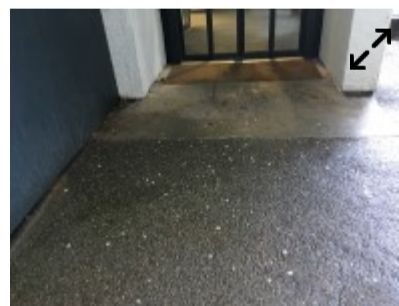
Comments

[View](#)

- There is a second similar manual door next to the automatic door.

Outside Access (North East Entrance - Side Door)

Photos



Entrance

[View](#)

- This information is for the entrance located at the side of the North East Entrance lobby at the rear left corner of the building.
- There is ramped/sloped access at this entrance.
- There is a canopy or recess which provides weather protection at this entrance.
- The main door(s) open(s) automatically (away from you).
- The door(s) is / are double.
- The width of the door opening is 141cm (4ft 8in).
- There is a small lip on the threshold of the entrance, with a height of 2cm or below.

Ramp/Slope

[View](#)

- There is a ramp/slope at this entrance.

- The ramp/slope is located in front of the entrance.
- The ramp/slope gradient is slight.
- The ramp is permanent.

Outside Access (North West Entrance)

Photos



Entrance

[View](#)

- This information is for the entrance located at the rear North West corner of the building on the right to the single storey extension.
- There is ramped/sloped access at this entrance.
- The main door(s) open(s) both ways.
- The door(s) is / are double.
- The door(s) may be difficult to open.
- The width of the door opening is 167cm (5ft 6in).
- There is a small lip on the threshold of the entrance, with a height of less than 2cm.

Ramp/Slope

[View](#)

- There is a ramp/slope at this entrance.
- The ramp/slope is located in front of the entrance.
- The ramp/slope gradient is slight.
- The ramp is permanent.
- There is a level landing at the top of the ramp.

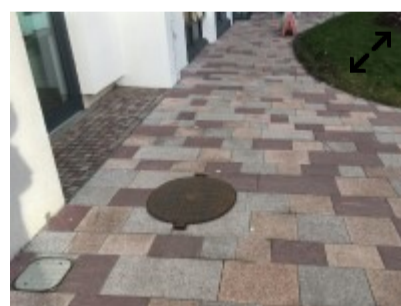
Comments

[View](#)

- Although marked as a fire exit, this manual door is also used as an entrance.

Outside Access (East Side Entrance)

Photos



Entrance

[View](#)

- This information is for the entrance located at the side of the building on the Saltire Centre side.
- There is ramped/sloped access at this entrance.
- The main door(s) open(s) automatically (towards you).
- The door(s) is / are double.
- The width of the door opening is 158cm (5ft 2in).
- There is a small lip on the threshold of the entrance, with a height of 2cm or below.

Ramp/Slope

[View](#)

- There is a ramp/slope at this entrance.
- The ramp/slope is located to the left and right when looking at the entrance.

- The ramp/slope gradient is easy.
- The ramp is permanent.

Outside Access (West Side Entrance)

Photos



Entrance

[View](#)

- This information is for the entrance located on the ground floor near Lecture Theatre W011.
- There is ramped/sloped access at this entrance.
- The main door(s) open(s) towards you (pull).
- The door(s) is / are double (with one leaf locked).
- The door(s) is / are heavy.
- The width of the door opening is 78cm (2ft 7in).
- There is a small lip on the threshold of the entrance, with a height of 2cm or below.

Ramp/Slope

[View](#)

- There is a ramp/slope at this entrance.
- The ramp/slope is located in front of the entrance.
- The ramp/slope gradient is easy.
- The ramp is permanent.

Entrance (Saltire Centre Links)

Photos



Entrance

[View](#)

- This information is for the entrance located at level 1 toward the rear of the building (level 5 similar).
- There is ramped/sloped access at this entrance.
- The main door(s) open(s) away from you (push).
- The door(s) is / are double.
- The door(s) is / are permanently held open.
- The width of the door opening is 163cm (5ft 4in).

Ramp/Slope

[View](#)

- There is a ramp/slope at this entrance.
- The ramp/slope is located in front of the entrance.
- The ramp/slope gradient is easy.
- The ramp or slope is permanent.
- There is a level landing at the top of the ramp.
- The ramp does have handrails.

- The handrails are on both sides going up.

Comments

[View](#)

- There are security barriers at the top of the ramp that reduce the width to 80cm.
- There is a similar link at floor 5 to the Saltire Centre level 4. The width is reduced to 78cm at this level.

Getting Around

Photos



Access

[View](#)

- There is step free access throughout the building.
- There is a slight ramp, with no handrails, for access to the ground floor rooms, toilets and lifts.
- This ramp is shown on photographs 1 and 2. This ramp is on the main corridor from the main entrance lobby at the front of the building, to the left on entrance.
- There is a slight ramp, with no handrails, for access to the lift lobby.
- The ramp is shown on photographs 3 and 4. This ramp is between the ground floor main corridor and the toilets and lift lobby area, leading to the East side entrance.
- There are doors in corridors which have to be opened manually.

Getting Around

[View](#)

- There is clear signage for building facilities/areas in the foyer/reception area.
- There is clearly written directional signage at key points of circulation routes.
- There is some flooring in corridors which is shiny and could cause issues with glare or look slippery to some people.
- There is some flooring in corridors which includes patterns or colours which could be confusing or look like steps or holes to some people.
- There is high colour contrast between the walls and floor in all areas.
- The lighting levels are moderate to good.
- This building does not play background music.
- There is not a hearing assistance system.

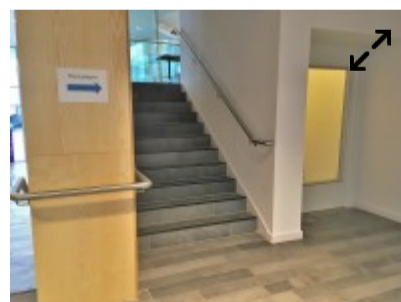
Comments

[View](#)

- Photos 5 and 6 serve to show the refurbishment of floor 2.

Other Floors (Lantern)

Photos



Steps

[View](#)

- The floors which are accessible by stairs are G, 1 and M.
- The stairs are located at the rear right of the main entrance lobby.
- The stairs are approximately 22m from the main entrance.
- There are 14 steps between floors.
- The lighting levels are moderate to good.
- The steps are not clearly marked.

- The steps are medium height (11cm - 17cm).
- The steps do have handrails.
- The steps have a handrail on both sides.
- There is a landing.
- This staircase rises to the first floor and then to the mezzanine with access to the Lantern Room.

Comments

[View](#)

- The Entrance Lobby platform lift bypasses these stairs.

Other Floors (Main Centre Stairwell)

Photos



Steps

[View](#)

- The floors which are accessible by stairs are G, 1, 2, 3, 4, 5, 6, 7 and 8.
- The stairs are located in the middle of the building by the main lifts.
- The stairs are approximately 3m from the East Side Entrance.
- There are 15+ steps between floors.
- There are manual, heavy, double doors to access the stairwell on all floors.
- The lighting levels are medium.
- The steps are clearly marked.
- The steps are medium height (11cm - 17cm).
- The steps do have handrails.
- The steps have a handrail on both sides.
- There is a landing.
- There are similar staircases at both the front and rear of the building serving all floors. Photographs 1-5 show the centre stairs. Photographs 6-10 show the front and rear stairs.

Lift (Lantern)

Photos



- There is a lift for public use.
- The lift is located at the right rear of the main entrance lobby.
- The lift is a platform lift.
- The floors which are accessible by this lift are G, 1 and 2.
- Wall mounted information boards are not provided at lift landings.
- Staff do not need to be notified for use of the lift.
- The clear door width is 90cm (2ft 11in).
- The lift door is manual, heavy and opens outwards.
- The dimensions of the lift are 110cm x 150cm (3ft 7in x 4ft 11in).
- There are separate entry and exit doors in the lift.
- There is not a mirror to aid reversing out of the lift.
- The lift does have a visual floor indicator.

- The lift does have an audible announcer.
- The lift does not have a hearing loop system.
- The lift does have Braille markings.
- The lift does have tactile markings.
- The controls for the lift are within 90cm - 120cm from the floor.
- The lighting level in the lift is bright.

Comments

[View](#)

- This lift gives access to the Lantern Room only at level 2.

Lift (Main Lifts)

 **Photos**



- There is a lift for public use.
- The lift is located to the right centre of the building.
- The lift is a standard lift.
- The floors which are accessible by this lift are G, 1, 2, 3, 4, 5, 6, 7, 8.
- Wall mounted information boards are provided at lift landings.
- The lift is approximately 10m (10yd 2ft) from the side entrance.
- Staff do not need to be notified for use of the lift.
- The clear door width is 104cm (3ft 5in).
- The dimensions of the lift are 198cm x 158cm (6ft 6in x 5ft 2in).
- There are not separate entry and exit doors in the lift.
- There is a mirror to aid reversing out of the lift.
- The lift does have a visual floor indicator.
- The lift does have an audible announcer.
- The lift does have a hearing loop system.
- The lift does have Braille markings.
- The lift does have tactile markings.
- The controls for the lift are within 90cm - 120cm from the floor.
- The lighting level in the lift is bright.

Comments

[View](#)

- There are 3 similar lifts adjacent to the first.

Accessible Toilet (Right Hand Transfer)

 **Photos**



- Accessible toilet facilities are available.

Location and Access

[View](#)

- There is pictorial signage on or near the toilet door.
- This accessible toilet is approximately 18m (19yd 2ft) from the side entrance.
- This accessible toilet is located in the cross corridor between the main lift lobby and side entrance and the main lecture theatre.
- The accessible toilet is located straight ahead as you enter.
- There is level access to this accessible toilet.

Features and Dimensions

View

- This is a shared toilet.
- A key is not required for the accessible toilet.
- The door opens outwards.
- The door is locked by a lever twist.
- The width of the accessible toilet door is 86cm (2ft 10in).
- The door may be difficult to open.
- The dimensions of the accessible toilet are 174cm x 251cm (5ft 9in x 8ft 3in).
- There is a clear 150cm x 150cm manoeuvring space in the accessible toilet.
- There is a lateral transfer space.
- As you face the toilet pan the transfer space is on the right.
- The lateral transfer space is 98cm (3ft 3in).
- There is a dropdown rail on the transfer side.
- There is a flush on the transfer side.
- The tap type is lever.
- There is a mixer tap.
- There is an emergency pull cord alarm in the cubicle.
- The emergency pull cord alarm is fully functional.
- Disposal facilities are available in the cubicle.
- There is a/are female sanitary and open waste paper bin disposal units.
- There is not a/are not coat hook(s).

Position of Fixtures

View

- Wall mounted grab rails are available for the toilet.
- As you face the toilet the wall-mounted grab rails are on both sides.
- There is not a shelf within the accessible toilet.
- There is a mirror.
- Mirrors are not placed at a lower level or at an angle for ease of use.
- The height of the toilet seat above floor level is 48cm (1ft 7in).
- There is a hand dryer.
- The hand dryer cannot be reached from seated on the toilet.
- The hand dryer is not placed higher than 100cm (3ft 3in).
- There is not a towel dispenser.
- There is a toilet roll holder.
- The toilet roll holder can be reached from seated on the toilet.
- The toilet roll holder is not placed higher than 100cm (3ft 3in).
- There is a wash basin.
- The wash basin can be reached from seated on the toilet.
- The wash basin is not placed higher than 74cm (2ft 5in).

Colour Contrast and Lighting

View

- There is a high colour contrast between the internal door and wall.
- The contrast between the external door and wall is good.
- The contrast between the wall-mounted grab rail(s) and wall is poor.
- There is a poor colour contrast between the dropdown rail(s) and wall.
- The toilet seat colour contrast is poor.
- The contrast between the walls and floor is good.
- The lighting levels are good.

Accessible Toilet(s) (Left Hand Transfer)

Photos



- There is an/are accessible toilet(s) available.

Location and Access

[View](#)

- This accessible toilet is located off the main corridor from the north west entrance, turn right at the first cross corridor and the accessible toilets cubicle is on your right side, opposite room W010A.
- This accessible toilet is approximately 48m (52yd 1ft) from the the rear entrance.
- There is step-free access into the accessible toilet.
- This is a shared toilet.
- A key is not required for the accessible toilet.
- There is pictorial and written text signage on or near the toilet door.
- The contrast between the external door and wall is high.
- The door opens outwards.
- The door is easy to open.
- The door is locked by a twist lock.
- The width of the accessible toilet opening is 89cm (2ft 11in).
- The contrast between the internal door and wall is high.
- The door has a horizontal grab rail.
- The contrast between the horizontal grab rail and internal door is high.

Toilet Features

[View](#)

- The dimensions of the accessible toilet are 210cm x 225cm (6ft 11in x 7ft 5in).
- The accessible toilet does have an unobstructed minimum turning space of 150cm x 150cm.
- The lighting levels are good.
- There is a lateral transfer space.
- As you face the toilet pan the transfer space is on the left.
- The lateral transfer space is 148cm (4ft 10in).
- The transfer space is obstructed by a sanitary bin and storage items.
- There is a flush on the transfer side.
- There is a spatula type lever flush.
- There is a dropdown rail on the transfer side.
- The contrast between the dropdown rail(s) and wall is low.
- There is a/are wall-mounted grab rail(s) available.
- As you face the toilet the wall-mounted grab rail(s) is/are on both sides.
- There is a vertical wall-mounted grab rail on the transfer side.
- There is a horizontal wall-mounted grab rail on the opposite side of the seat to the transfer space.
- The contrast between the wall-mounted grab rail(s) and wall is low.
- The contrast between the walls and floor is high.
- There is an emergency alarm.
- The emergency pull cord alarm was out of reach (higher than 10cm (4") from floor) when surveyed.
- There is not a red flashing fire alarm beacon within the toilet.
- Disposal facilities are available in the toilet.
- There is a/are sanitary disposal units.
- There is not a/are not coat hook(s).

Additional Fixtures

[View](#)

- There is a mirror.
- The mirror is not placed at a lower level or at an angle for ease of use.

- There is a shelf within the accessible toilet.
- The shelf does not have the minimum dimensions of 12.5cm x 40cm.
- The shelf is at a height of 76cm.
- The shelf is located where it is reachable.
- The toilet has a cistern.
- The height of the toilet seat above floor level is 48cm (1ft 7in).
- The toilet seat colour contrast is low.
- There is a toilet roll holder.
- The toilet roll holder can be reached from seated on the toilet.
- The toilet roll holder is placed higher than 100cm (3ft 3in).
- The height of the toilet roll holder is 106cm (3ft 6in).
- The contrast between the toilet roll holder and the wall is low.
- There is a wash basin.
- The wash basin and tap(s) can be reached from seated on the toilet.
- The wash basin is not placed higher than 74cm (2ft 5in).
- The height of the wash basin is 73cm (2ft 5in).
- There are vertical wall-mounted grab rails on both sides of the wash basin.
- The contrast between the wash basin wall-mounted grab rail(s) and wall is low.
- The wash basin tap type is lever mixer.
- There is a wall fixed soap dispenser.
- The soap dispenser can be reached from seated on the toilet.
- The height of the soap dispenser is 81cm.
- There is not a towel dispenser.
- There is a hand dryer.
- The hand dryer is not placed higher than 100cm (3ft 3in).
- The height of the hand dryer is 67cm (2ft 2in).
- The contrast between the hand dryer and the wall is low.

Standard Toilet(s)

Photos



Location of Standard Toilet(s)

[View](#)

- There are male standard toilets facilities on the ground floor, the first floor, the fourth floor, the sixth floor and the seventh floor.
- There are female standard toilets facilities on the ground floor, the first floor, the second floor, the fourth floor, the fifth floor and the eighth floor.
- There are shared toilet cubicles on level 2, 3, 5, 6, 7 and 8 marked 'staff'.

Standard Toilet Surveyed

[View](#)

- A male standard toilet was surveyed.
- The toilet surveyed is located on the ground floor by the main lift lobby.
- There is a female standard toilet in the same location.
- The standard toilet surveyed is approximately 18m from the side entrance.
- There is not a/are not cubicle(s) suitable for ambulant disabled people in the standard toilet(s) surveyed.
- Lighting levels in the standard toilet surveyed are varied.

Comments

[View](#)

- There are standard toilet facilities on the third and seventh floor in the main stairwell undergoing refurbishment.

