

# PARTNERSHIPS - WHAT'S THE WORST THAT CAN HAPPEN?

Phil Berry, Director, Validation Partnerships and Student Policy & Casework  
Laura Buckman, Senior Quality & Partnership Manager,  
Open University Validation Partnerships

16 April 2019

?  
WHY  
BOTHER  
WHEN  
YOU CAN  
NOT



# Contents

- 01 Introduction
- 02 Why Partnerships ?
- 03 When something goes wrong
- 04 Just when you thought it was over...
- 05 Now what?
- 06 Lessons learnt
- 07 Questions?



# Introduction



The Open  
University

50  
YEARS



## Why Partnerships?



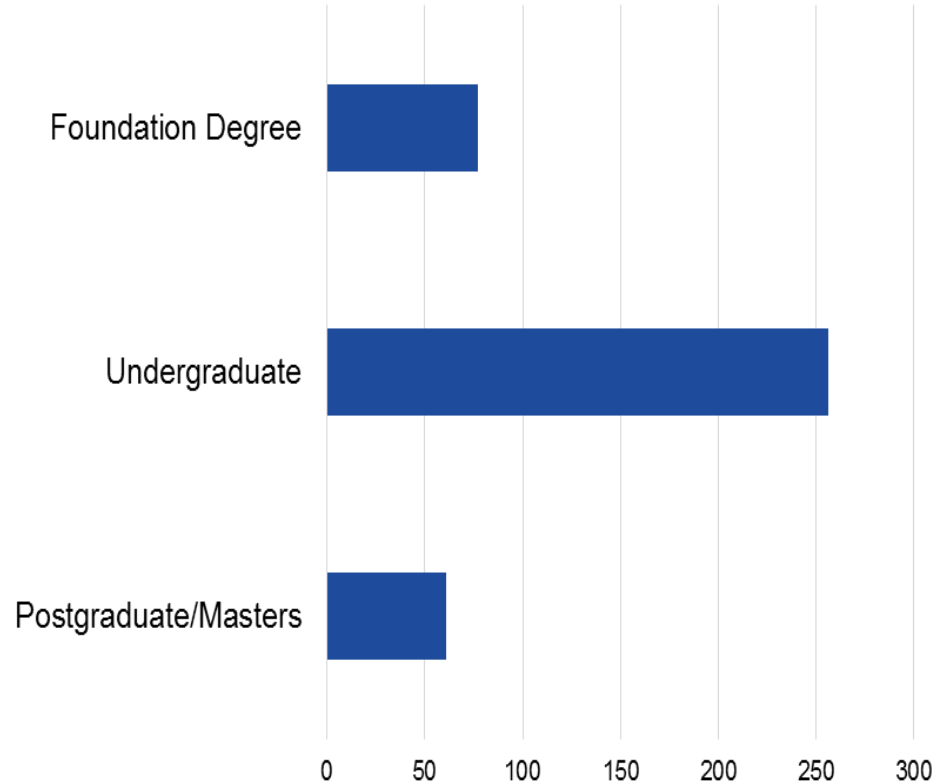
The Open  
University

50  
YEARS

411 validated programmes were run by OUVP partners

51,070 students were registered on OU Validated Awards

94 Exam boards were held, involving 262 external examiners







# When something goes wrong



The Open  
University

50  
YEARS





Source: RadioTimes (2019)

By Email: [REDACTED]@bbc.co.uk

**Private and Confidential**  
**Not for publication or broadcast**

[REDACTED]  
Producer  
BBC Current Affairs

Carter-Ruck

**URGENT**

Dear Sirs

**Grafton College and BBC Panorama**

We are instructed by [REDACTED], Director of Grafton College and [REDACTED], Head of Operations at Grafton College in connection with your letters to them of 3 November, which they did not receive until 6 November.

Our clients are deeply concerned that you plan to broadcast very seriously defamatory allegations implicating them in fraud designed to admit bogus and inadequately qualified students in order to facilitate access to student finance including unwarranted payment of tuition fees to the college.

**Carter-Ruck Solicitors**

6 St Andrew Street  
London EC4A 3AE

T +44 (0)20 7353 5005  
F +44 (0)20 7353 5553  
DX 333 Chancery Lane  
[www.carter-ruck.com](http://www.carter-ruck.com)

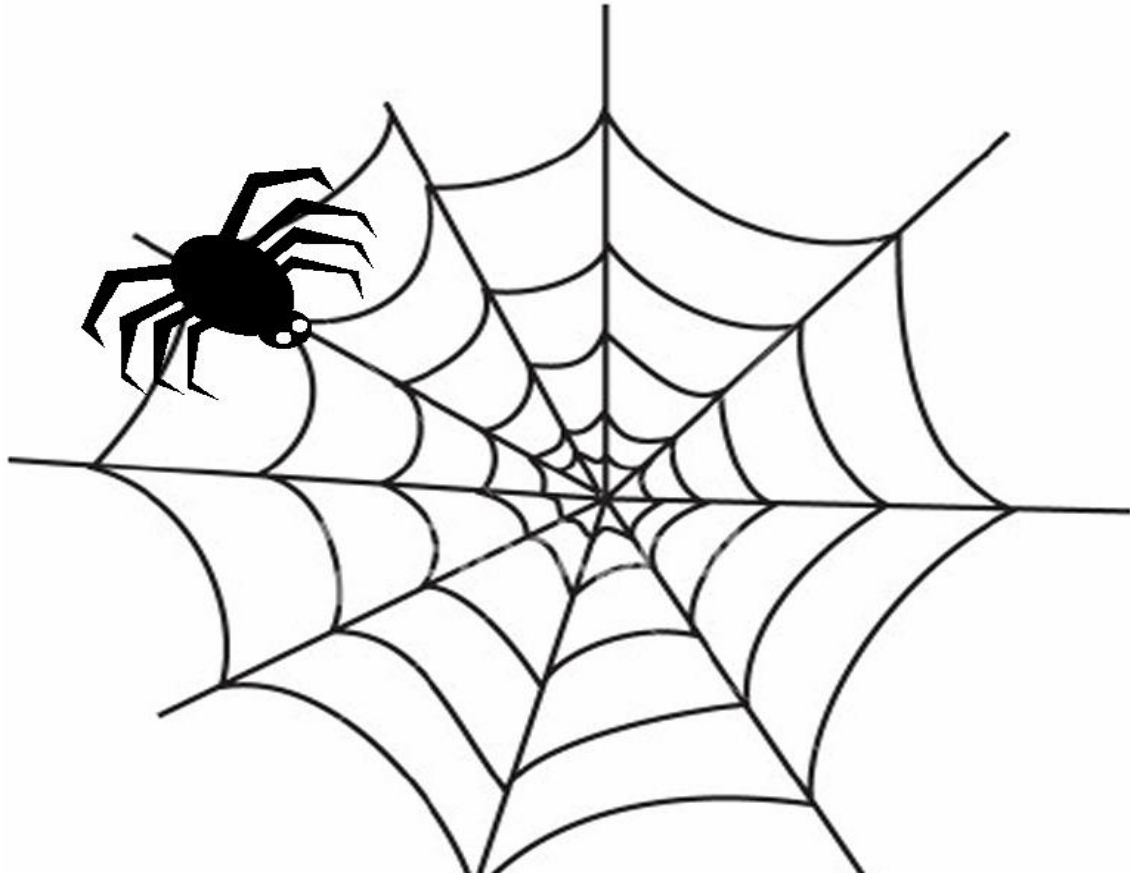




# What would you do?

# What we did.....











Source: QAA



Department  
for Education

Source: DfE



















## What happens when an alternative provider falls into administration?

ANALYSIS | 19th Jan 2018

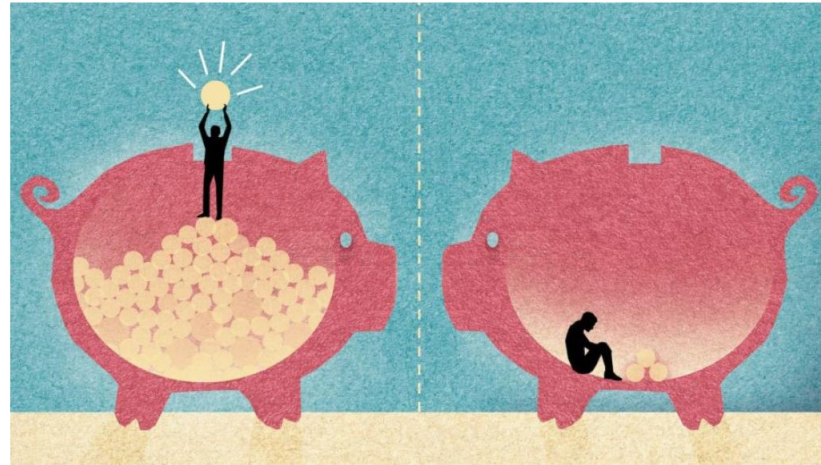


Image: iKon

Authors



Catherine Boyd

Last week London College of Contemporary Media (LCCM) entered administration. Its validating body – the Open University – was keen to find a new



Latest articles



Women professors, pay, promotion, and academic housekeeping

# QUALITY MATTERS



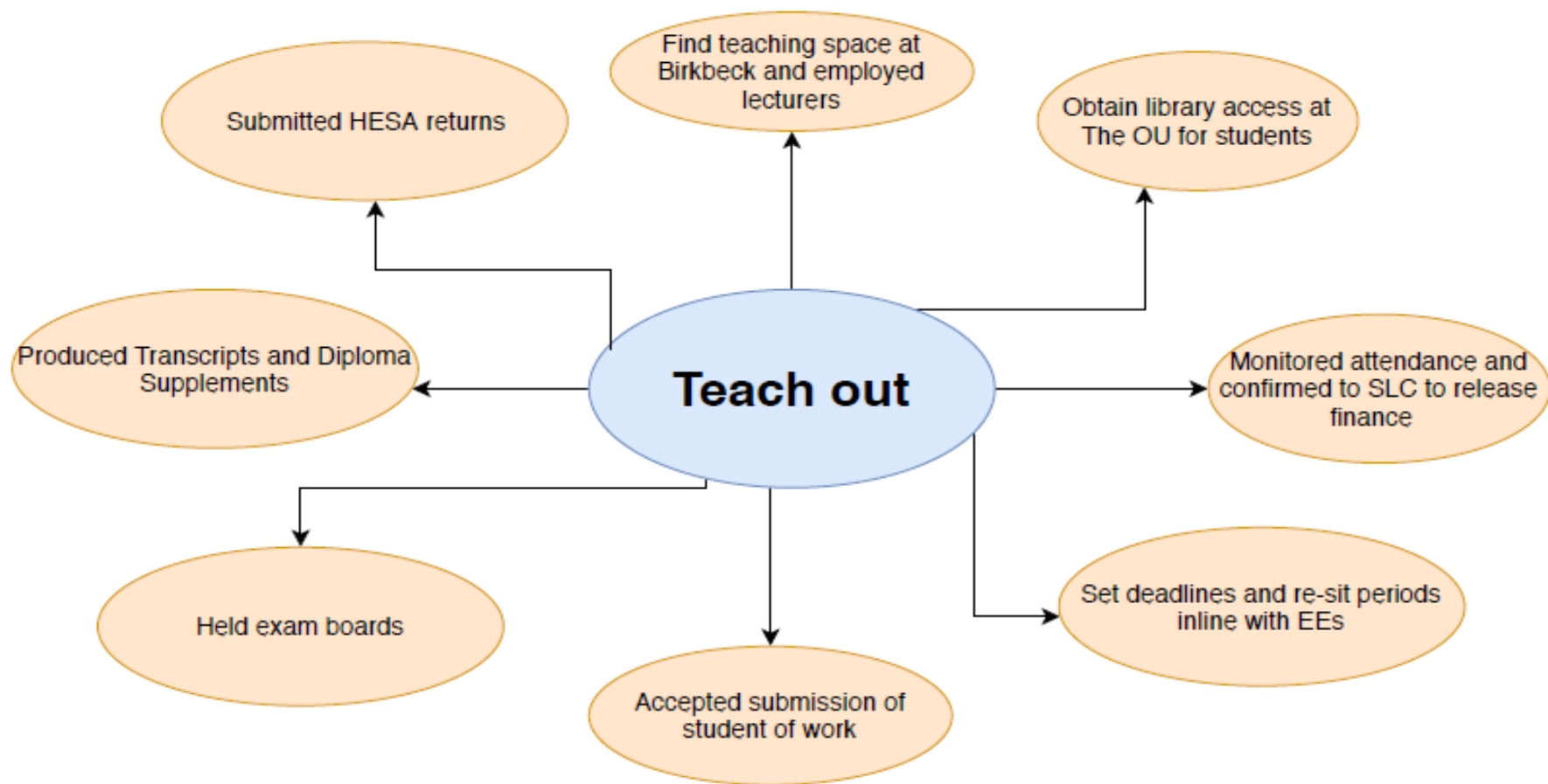
# What would you do?



















The Open  
University

50  
YEARS

[50.open.ac.uk](https://50.open.ac.uk)

<https://unsplash.com/search/photos/journey>

[https://www.google.com/search?q=mortar+board&source=lnms&tbm=isch&sa=X&ved=0ahUKEwiW3OXD2sXgAhW2RBUIHQOkC-wQ\\_AUIDigB&biw=1301&bih=592#imgrc=kPo8MxL5L4KQsM:&spf=1550507609871](https://www.google.com/search?q=mortar+board&source=lnms&tbm=isch&sa=X&ved=0ahUKEwiW3OXD2sXgAhW2RBUIHQOkC-wQ_AUIDigB&biw=1301&bih=592#imgrc=kPo8MxL5L4KQsM:&spf=1550507609871)

<https://www.radiotimes.com/tv-programme/5w4/panorama/>

<https://www.redbubble.com/people/mdkgraphics/works/7463097-cartoon-popcorn-bag?p=womens-fitted-scoop&rel=carousel>

<https://www.qaa.ac.uk/>

[https://www.google.com/search?tbm=isch&q=cafe+nero&chips=q:cafe+nero,g\\_1:logo:lbYZJJhMBQg%3D&usg=AI4\\_-kQ26WSqjvnSJ5pBZsd0C79oEEdhuQ&sa=X&ved=0ahUKEwi43NDOjY7hAhUwXRUIHYoIBJ4Q4IYIKCgA&biw=1301&bih=592&dpr=1.05#imgrc=ZWib2x242IM6iM:&spf=1552995124840](https://www.google.com/search?tbm=isch&q=cafe+nero&chips=q:cafe+nero,g_1:logo:lbYZJJhMBQg%3D&usg=AI4_-kQ26WSqjvnSJ5pBZsd0C79oEEdhuQ&sa=X&ved=0ahUKEwi43NDOjY7hAhUwXRUIHYoIBJ4Q4IYIKCgA&biw=1301&bih=592&dpr=1.05#imgrc=ZWib2x242IM6iM:&spf=1552995124840)